

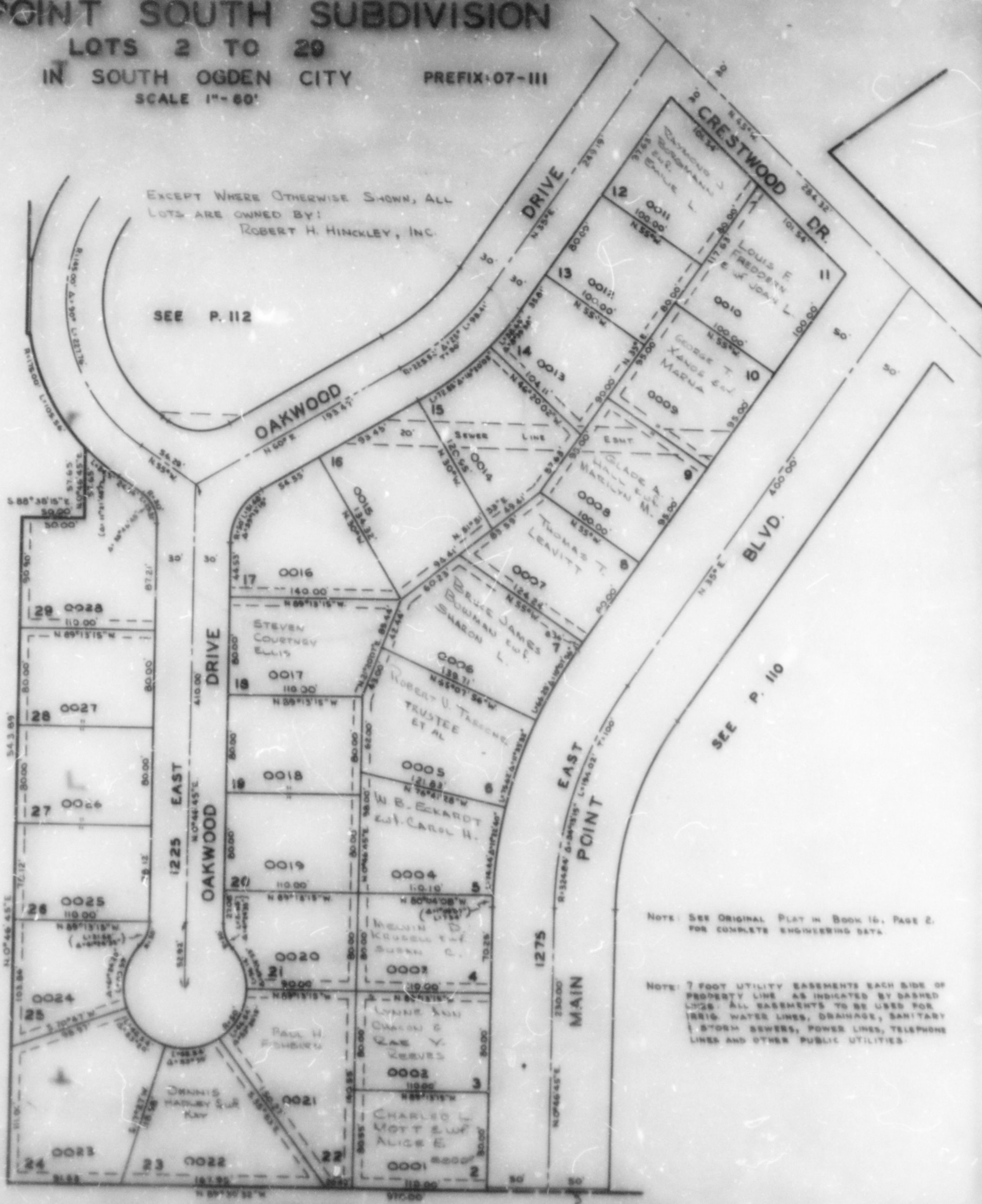
PART OF NW 1/4 OF SECTION 22, T.5N., R.1W., S.L.B.&M.
MAIN POINT SOUTH SUBDIVISION
 LOTS 2 TO 29
 IN SOUTH OGDEN CITY PREFIX 07-III
 SCALE 1"=60'

TAXING UNIT 27

III

EXCEPT WHERE OTHERWISE SHOWN, ALL
 LOTS ARE OWNED BY:
 ROBERT H. HINKLEY, INC.

SEE P. 112



SEE PAGE 80

NOTE: SEE ORIGINAL PLAT IN BOOK 16, PAGE 2,
 FOR COMPLETE ENGINEERING DATA.

NOTE: 7 FOOT UTILITY EASEMENTS EACH SIDE OF
 PROPERTY LINE AS INDICATED BY DASHED
 LINES. ALL EASEMENTS TO BE USED FOR
 IRRIG. WATER LINES, DRAINAGE, SANITARY
 & STORM SEWERS, POWER LINES, TELEPHONE
 LINES AND OTHER PUBLIC UTILITIES.

SEE PAGE 85

S.D. 9-65